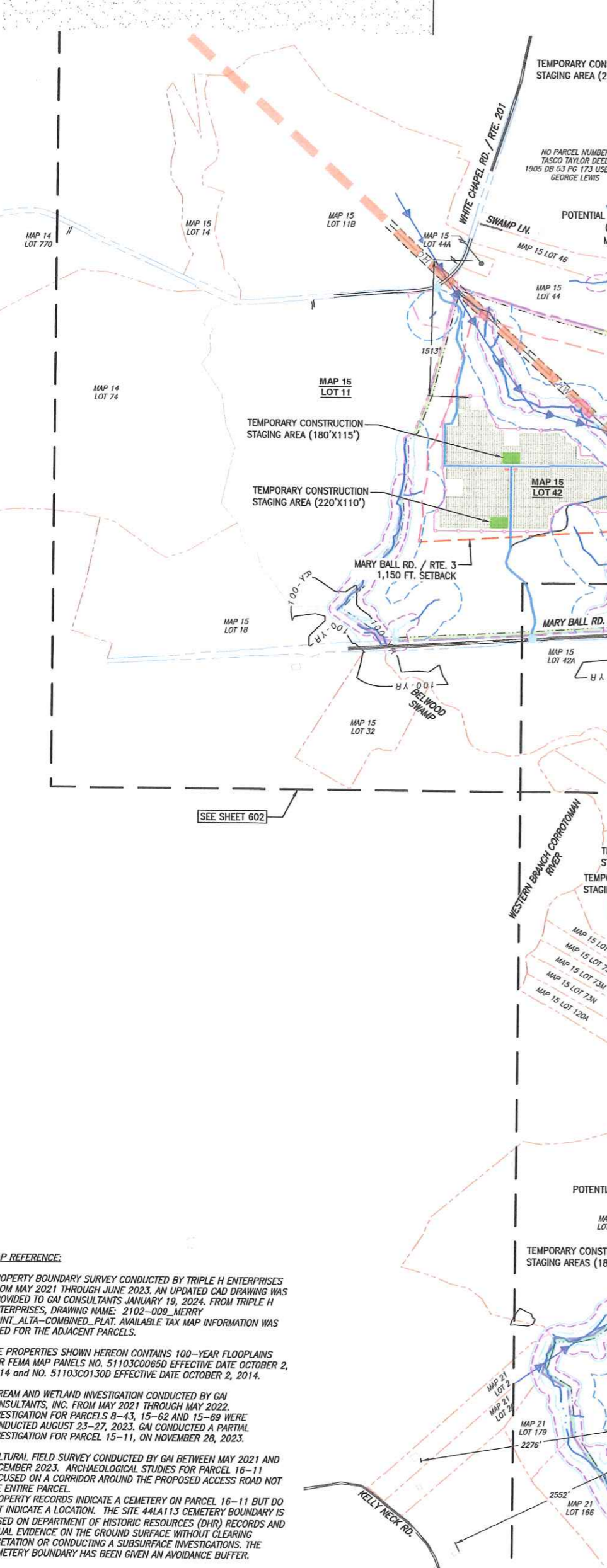
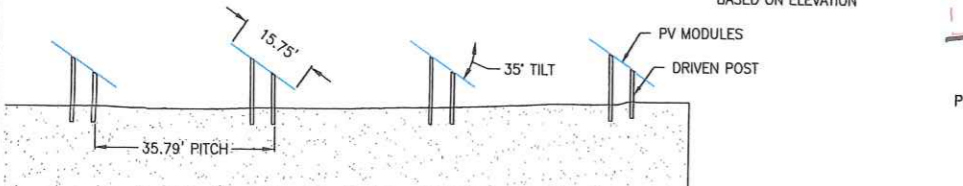


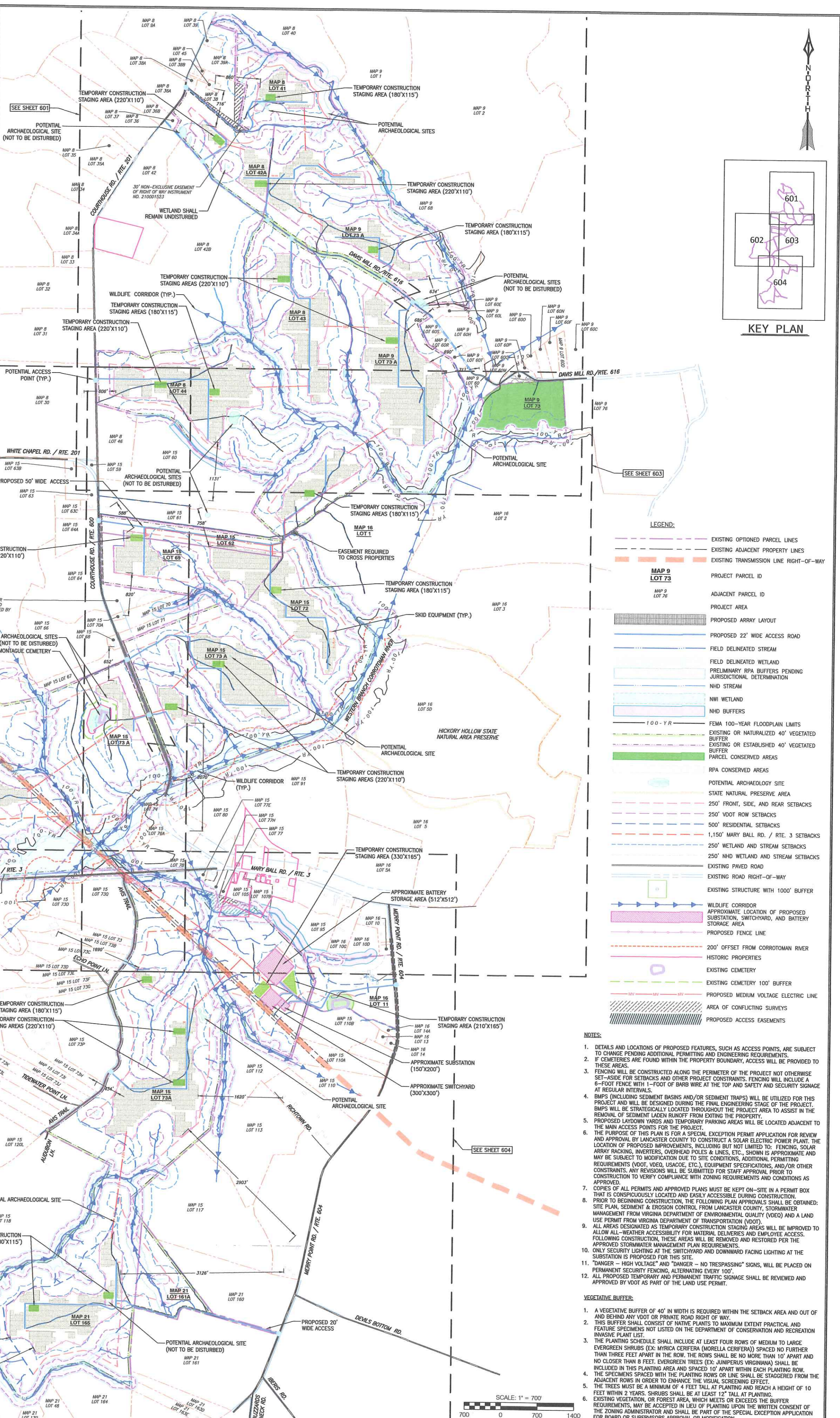
OPTIONED PARCEL INFORMATION					
TAX MAP	LOT NUMBER	OWNER	LOT SIZE (AC. +/-)	PROPOSED ARRAY ACREAGE (ac.)	ZONING
8	41	K&J TIMBERLANDS	60.9	6.8	A-1 / AGRICULTURE LIMITED
8	42A	CHADWICK PROPERTIES LLC	53.7	7.2	A-2 / AGRICULTURE GENERAL
8	43	DELANO WINIFRED B & BIDDLE COMB, RAPHW. WEST C/O BEALE DELANO	131.5	21.2	A-1 / AGRICULTURE LIMITED
8	44	HANCOCK JOHN MUTUAL LIFE INS CO. C/O HANCOCK FOREST MANAGEMENT - 13950	221.9	47.5	A-1 / AGRICULTURE LIMITED
9	73	HANCOCK JOHN MUTUAL LIFE INS CO. C/O HANCOCK FOREST MANAGEMENT - 13950	45.3	0.0	A-2 / AGRICULTURE GENERAL
9	73A	HANCOCK JOHN MUTUAL LIFE INS CO. C/O HANCOCK FOREST MANAGEMENT - 13950	327.7	62.2	A-1 / AGRICULTURE LIMITED
15	11	ANNA MARIA BUFFA, JOSEPH RUSSO, AND SAL RUSSO, AS TENANTS IN COMMON IN EQUAL 1/3 SHARES FROM JOSEPH RUSSO & CINDY RUSSO	156.0	0.0	A-2 / AGRICULTURE GENERAL
15	42	WOOD PRESERVERS, INC.	273.3	37.4	A-1 / AGRICULTURE LIMITED
15	62	LEWIS GEORGE	27.6	1.6	A-2 / AGRICULTURE GENERAL
15	69	LEWIS GEORGE	70.5	21.1	A-2 / AGRICULTURE GENERAL
15	72	HANCOCK JOHN MUTUAL LIFE INS CO. C/O HANCOCK FOREST MANAGEMENT - 13950	104.2	18.6	A-1 / AGRICULTURE LIMITED
15	73A	HANCOCK JOHN MUTUAL LIFE INS CO. C/O HANCOCK FOREST MANAGEMENT - 13950	679.1	70.0	A-1 / AGRICULTURE LIMITED
16	1	PICKUS ROBERT JOHN III & CAROLYN ANN (FOR PROPOSED ACCESS AND UTILITY EASEMENT)	102.9	EASEMENT ONLY	A-2 / AGRICULTURE GENERAL
16	11	JAMES WILBERT STANLEY III & CHEQUYIN GIESE TTEES O/T W/S III & G/G JOINT TRUST & GIESE, CRAIG (FOR PROPOSED ACCESS EASEMENT)	41.2	0.0	A-2, AGRICULTURE GENERAL
21	161A	HANCOCK JOHN MUTUAL LIFE INS CO. C/O HANCOCK FOREST MANAGEMENT - 13950	32.4	0.0	A-2, AGRICULTURE GENERAL
21	165	HANCOCK JOHN MUTUAL LIFE INS CO. C/O HANCOCK FOREST MANAGEMENT - 13950	191.9	27.4	A-2, AGRICULTURE GENERAL
TOTAL			2,520.1	321.0	

FIXED TILT RACKING SYSTEM SEE MANUFACTURER DRAWINGS FOR ADDITIONAL DETAILS
 TYPICAL TABLE SIZE 2 MODULES PORTRAIT 14 MODULES WIDE
 RACKING DIMENSIONS VARY BASED ON ELEVATION



NO.	DATE	DWN:	CHK:	APV:	DESCRIPTION:
2	07/11/2024	RMS	CFB	CFB	REVISED TO INCLUDE PARCEL 15-11
1	02/20/2024	DMA	CFB	CFB	REVISIONS PER COUNTY COMMENTS

This drawing was produced with computer aided drafting technology and is supported by electronic drawing files. Do not review this drawing via manual drafting methods.
 GAI CAD FILE PATH: Z:\2024\20240801 - DMH-Merry Point Solar\CAD-revised-from-022024\Production DWG\13 - SDP Submission\20240801-01-20-C-E2-600.dwg PLOTTED On: 7/11/2024 5:12:22 PM PLOTTED By: Rachel M. Stukenberg PLOT FILE: GAI.dwg



DRAWING TITLE		PROJECT		CLIENT	
EXHIBIT 6.1 - PRELIMINARY SITE PLAN		MERRY POINT SOLAR PROJECT		Dominion Energy	
LANCASTER, VA 22503		gai consultants		600 EAST CANAL STREET RICHMOND, VIRGINIA 23219	

DRAWN BY:	CHECKED BY:	APPROVED BY:	GAI FILE NUMBER:
D.MURRI	C.BRENDEL	C.BRENDEL	R201080-01-20-C-E2-600
DWG TYPE:	SCALE:	ISSUE DATE:	ALT./CLIENT DRAWING NUMBER:
CIVIL	AS SHOWN	09/12/2023	
REVISION:	SHEET NO.:	GAI DRAWING NUMBER:	
	2	R201080-01-20-C-E3-600	